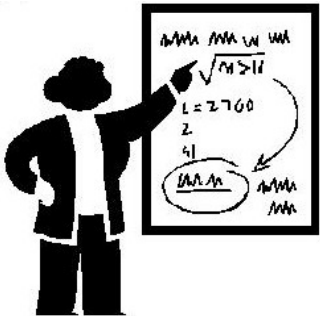


# Education Funding in South Dakota

Compared to past funding and  
compared to adjacent states



2014 ASBSD AND SASD CONVENTION  
August 7, 2014

Raymond Ring  
Emeritus Professor of Economics  
University of South Dakota  
Member, S. D. House of Representatives



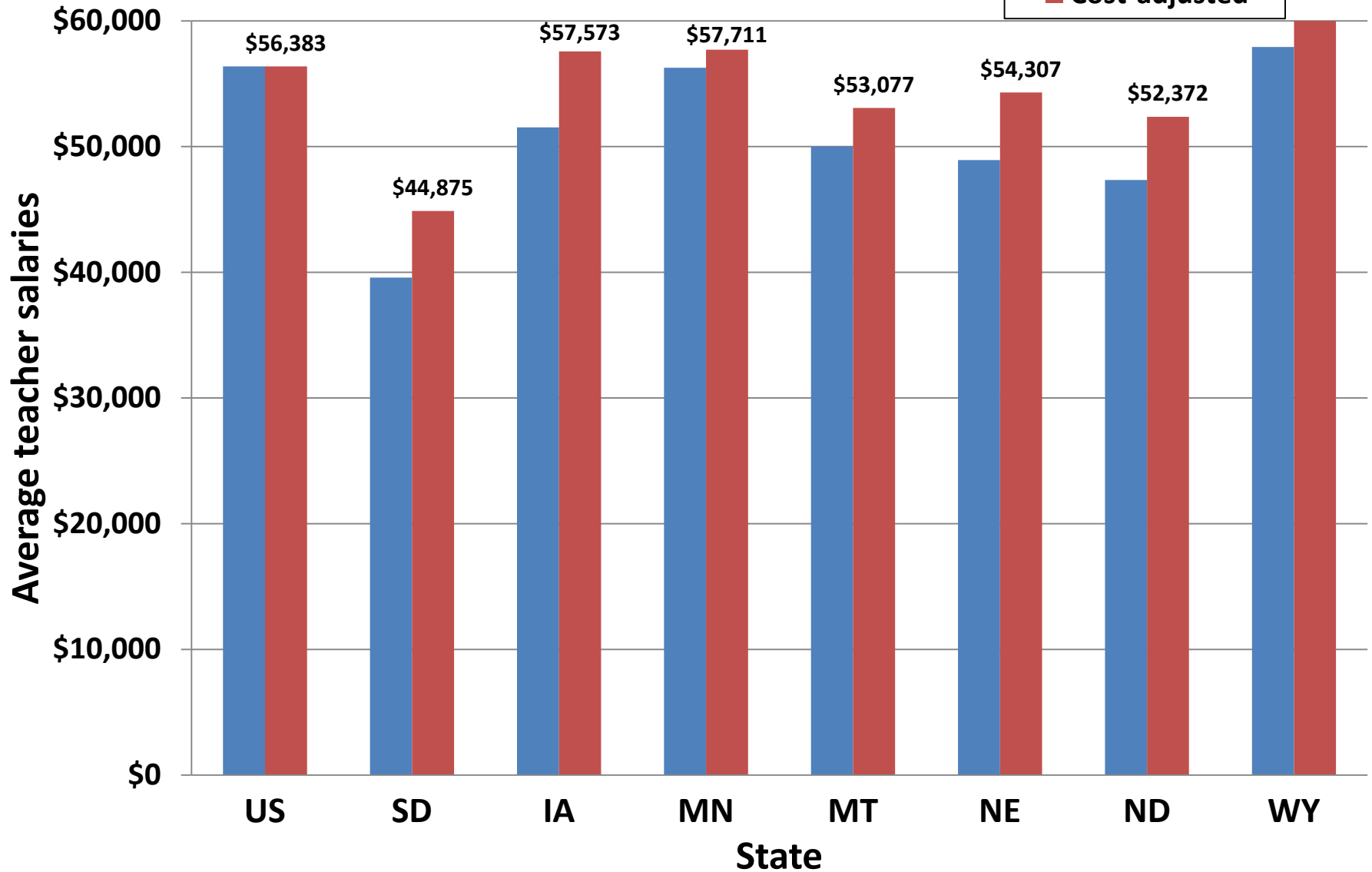
## Comparing Teacher Salaries, U. S., S. D., and surrounding states, 2012 - 13

	State	US	SD	IA	MN	MT	NE	ND	WY
1	Average teachers' salary, 2012 - 13	56,383	39,580	51,528	56,268	49,999	48,931	47,344	57,920
2	SD / Other state	0.70	1.00	0.77	0.70	0.79	0.81	0.84	0.68
3	SD - Other state	-16,803	0	-11,948	-16,688	-10,419	-9,351	-7,764	-18,340
4	Regional Price Parity Index, 2012	1.00	.88	.90	.98	.94	.90	.90	.96
5	Ave. teachers' salary adj. with RPP	56,383	44,875	57,573	57,711	53,077	54,307	52,372	60,083
6	SD / Other state	0.80	1.00	0.78	0.78	0.85	0.83	0.86	0.75
7	SD - Other state	-11,508	0	-12,698	-12,835	-8,202	-9,432	-7,496	-15,208
8	Median resid. property tax, 2012	2,075	1,797	1,834	2,186	1,609	2,399	1,737	1,149
9	Ave. state and local sales tax rate, 2014		5.83	6.78	7.19	0.00	6.79	6.55	5.49

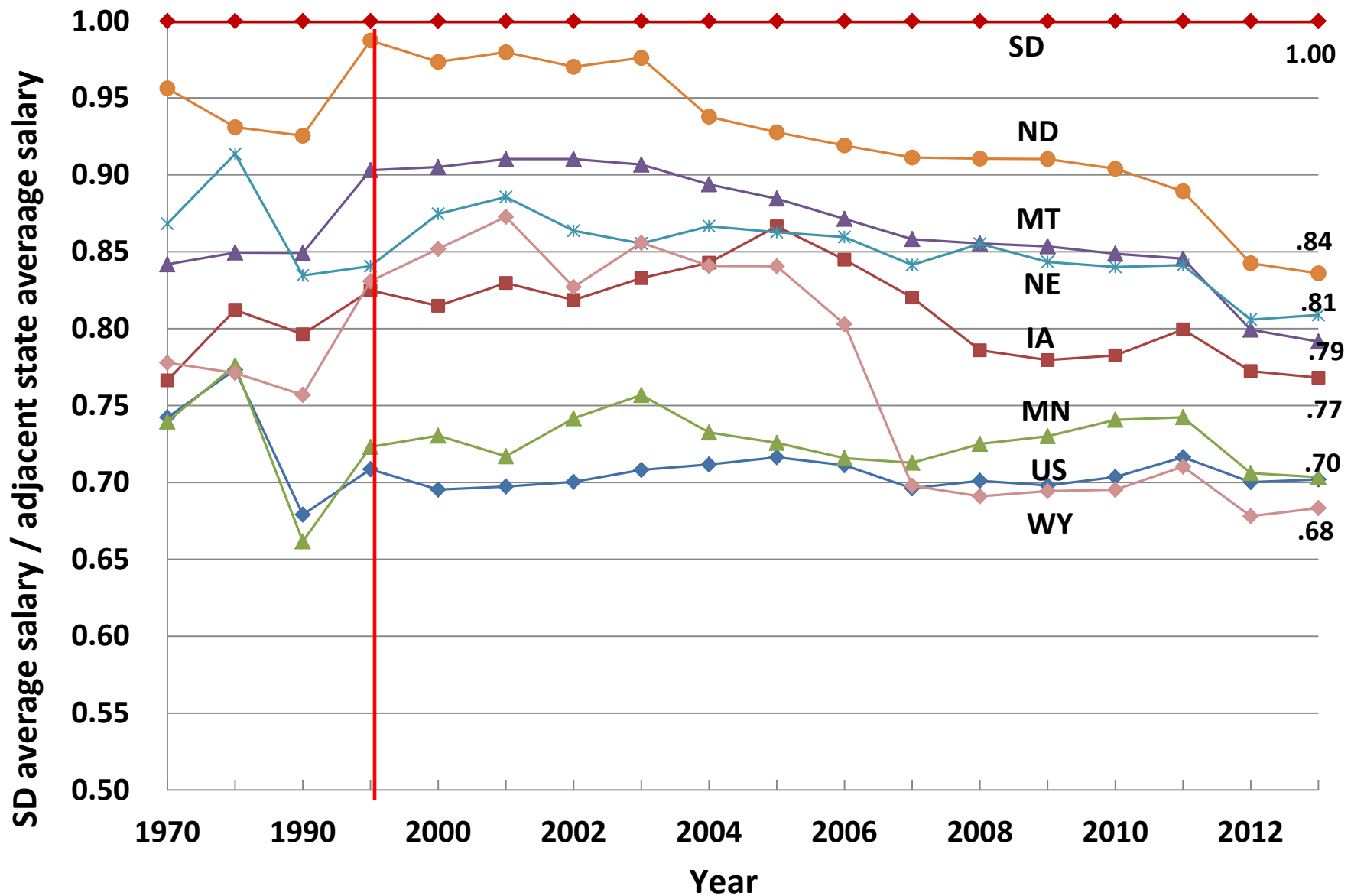
# Average teacher salaries, 2012 - 13

## Nominal and cost-adjusted

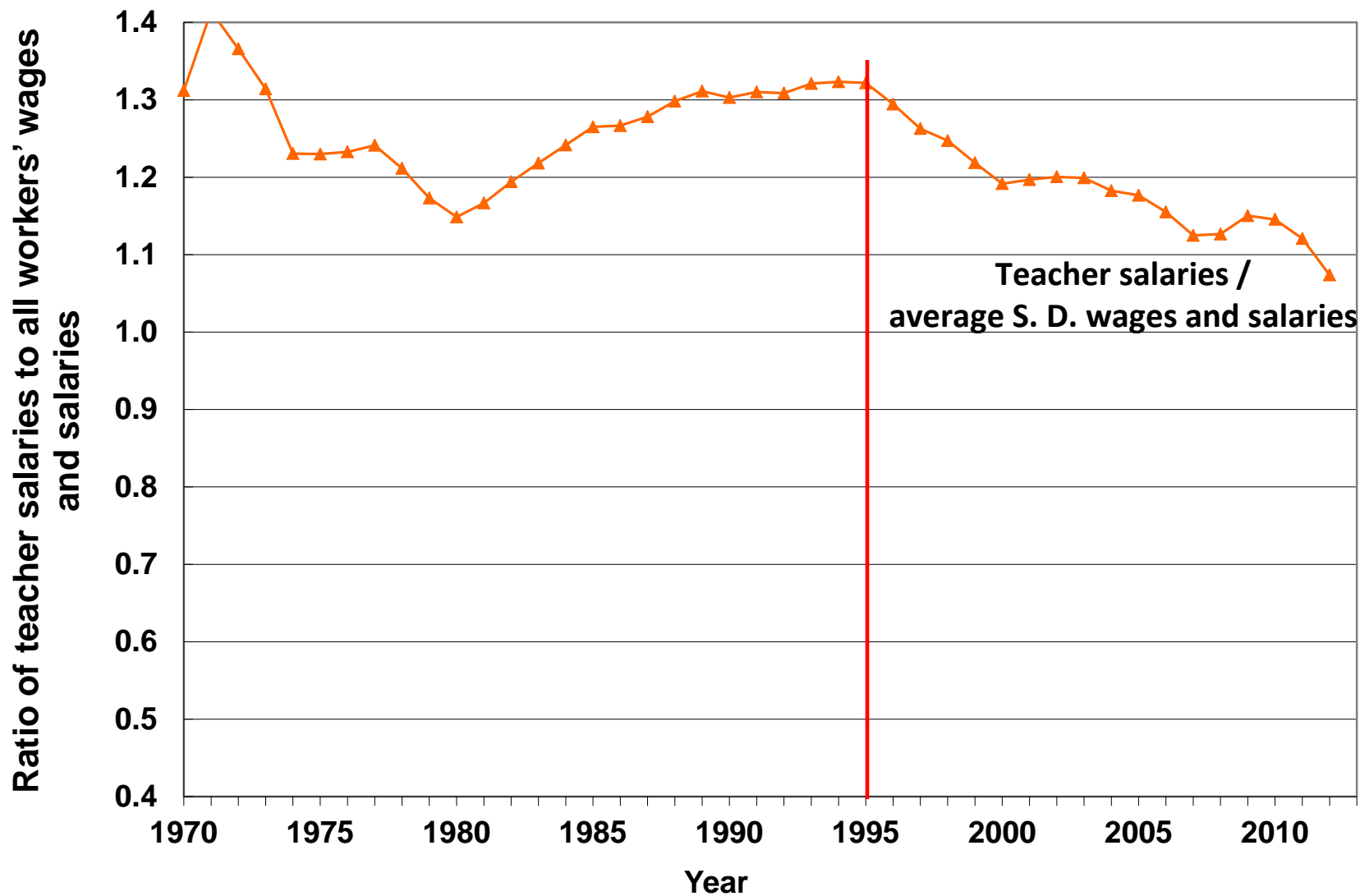
Nominal  
Cost-adjusted



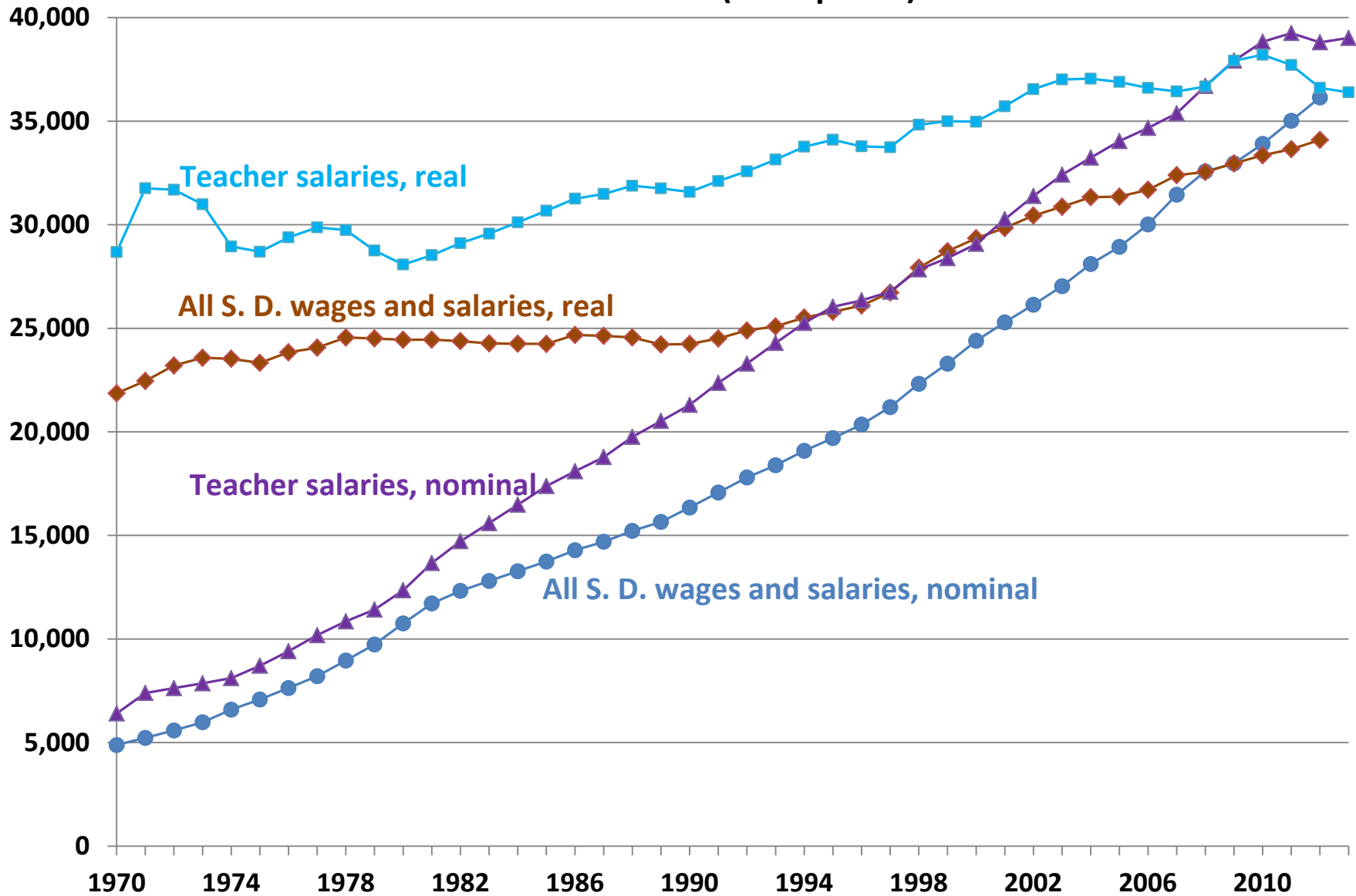
# Average teacher salaries, selected years



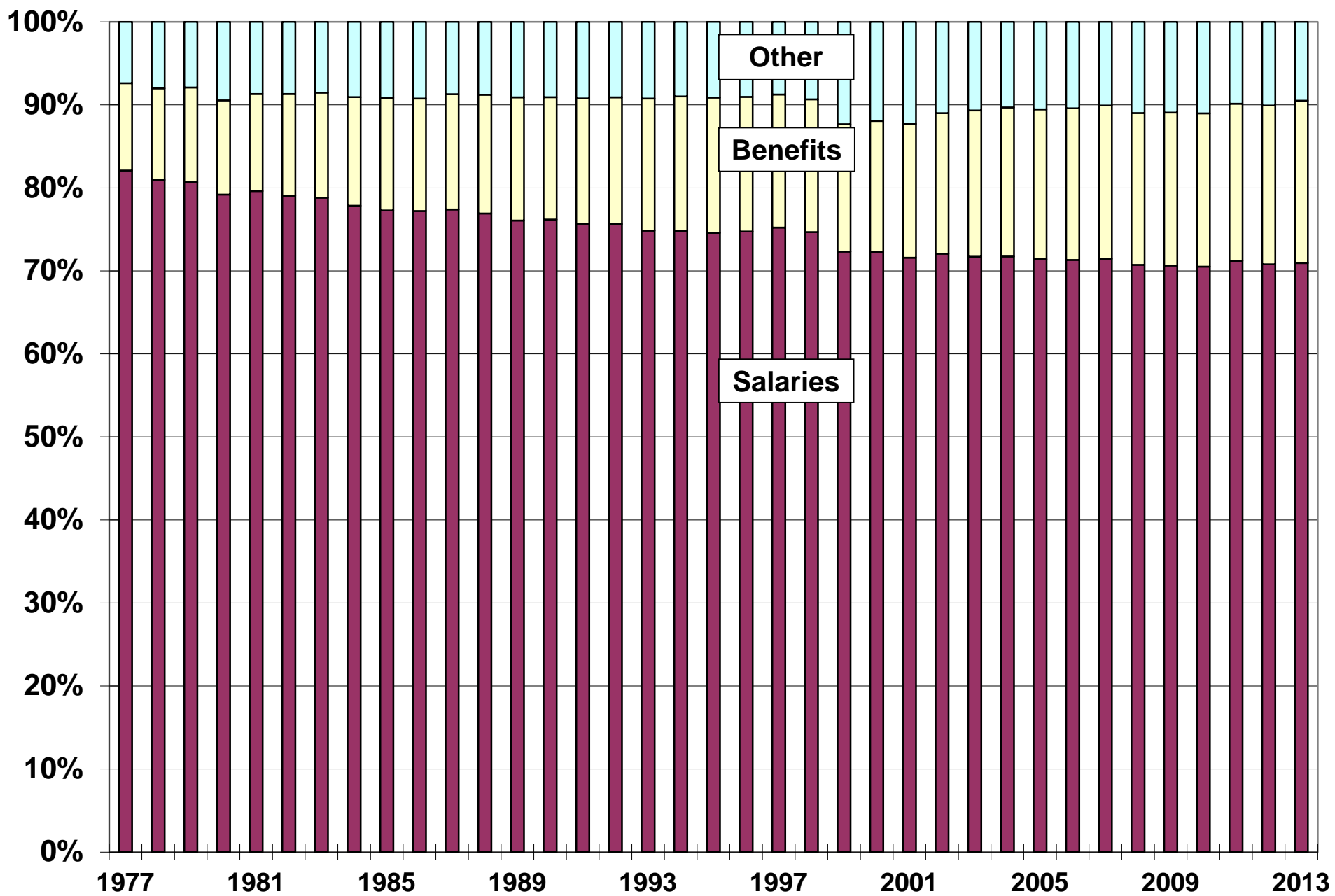
**Comparing teacher salaries to all S. D. workers' wages and salaries**



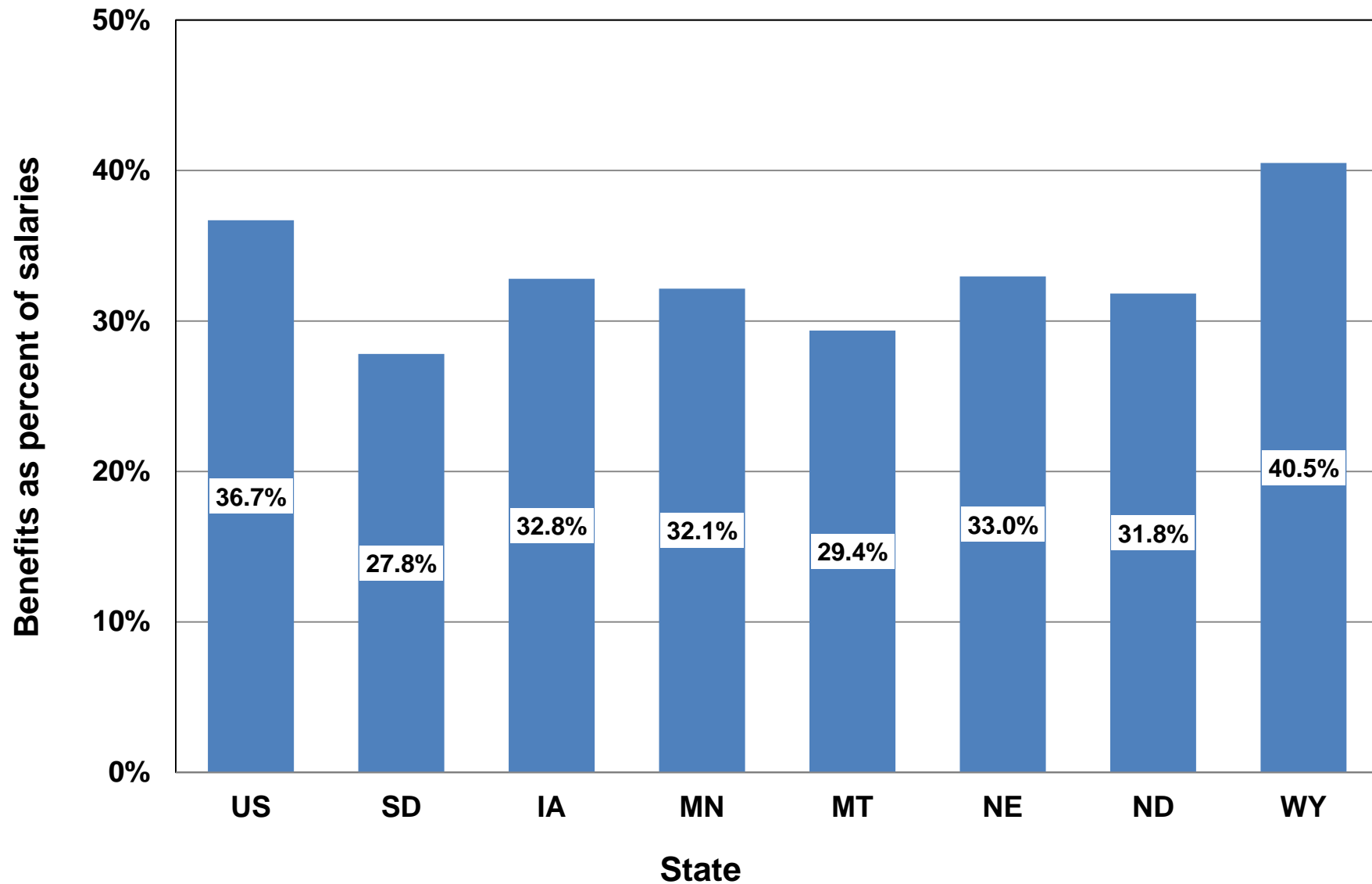
Comparing teacher salaries to all S. D. workers' wages and salaries,  
nominal and real (2009 prices)



# School district general fund + special education spending by object

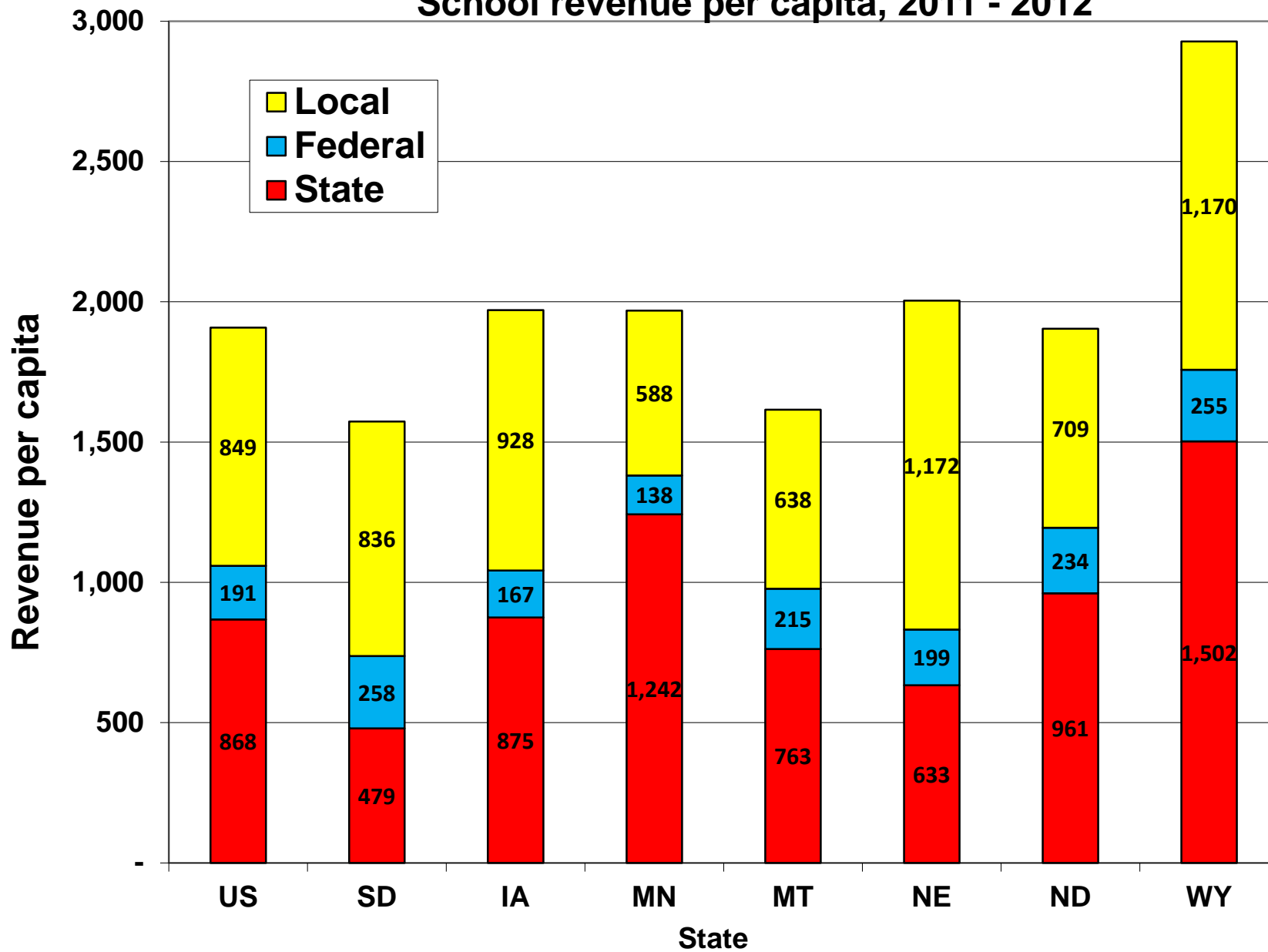


**Teacher benefits as percent of teacher salaries, 2011 - 2012**

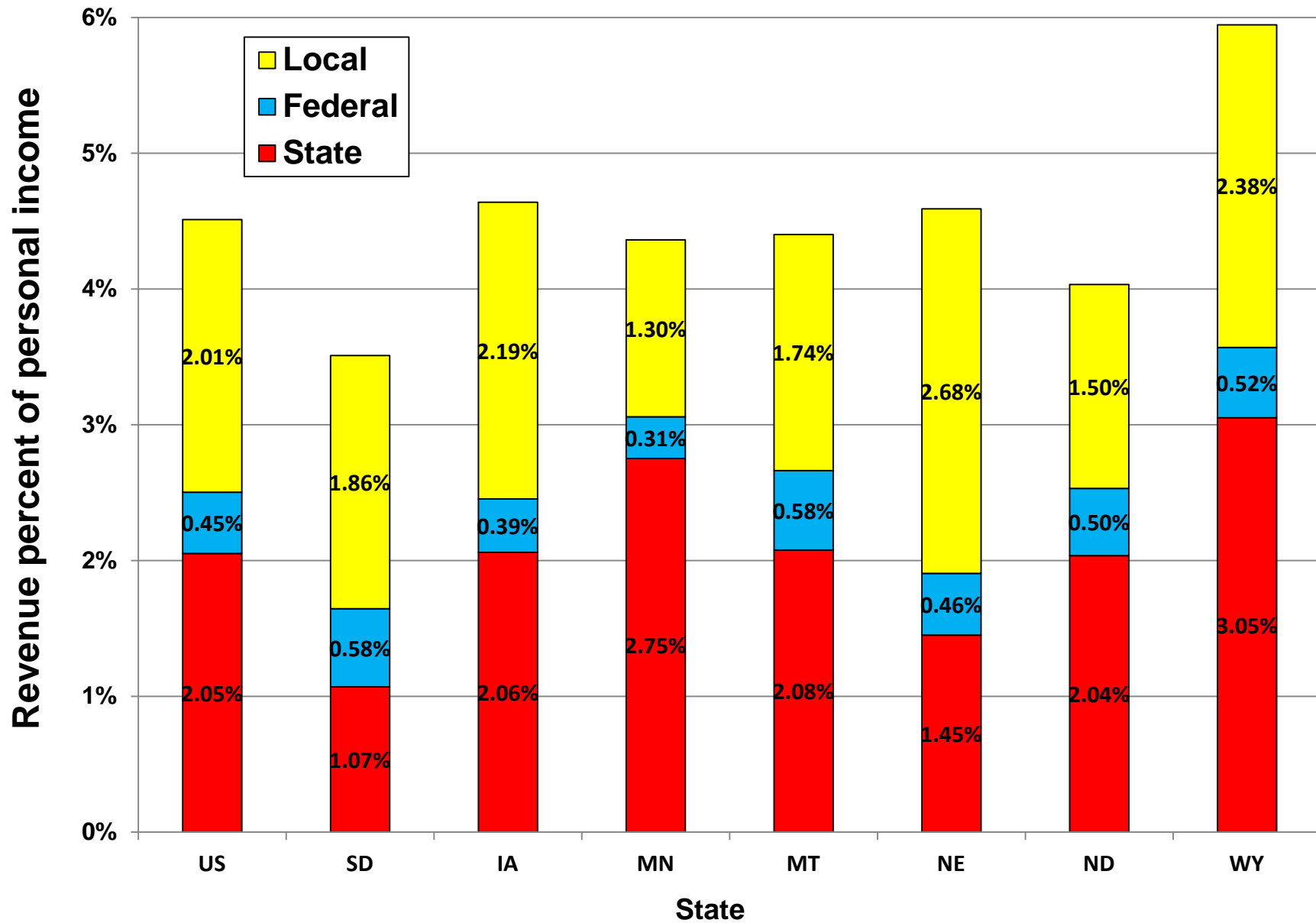




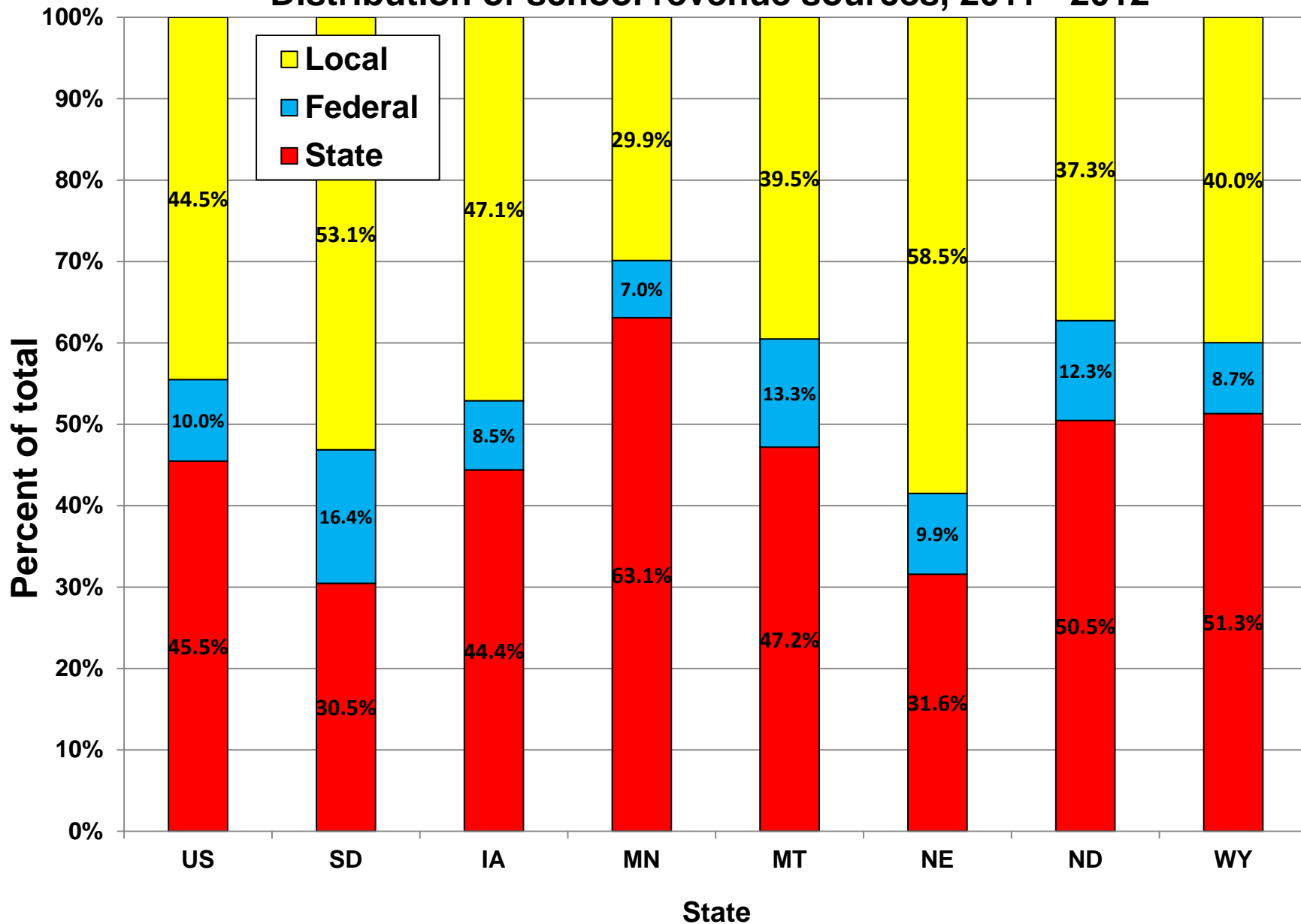
# School revenue per capita, 2011 - 2012



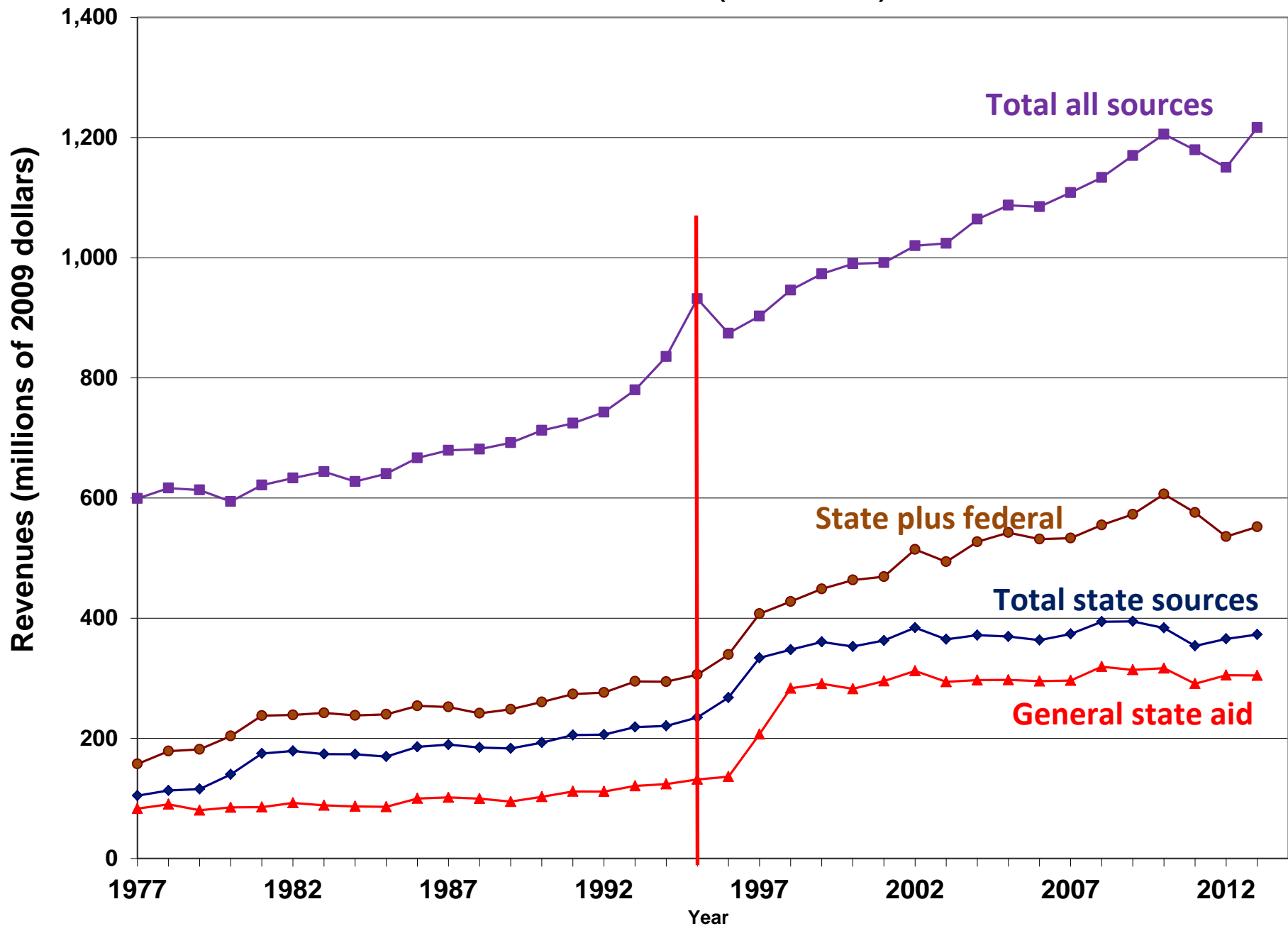
# School revenue as percent of personal income, 2011 - 2012



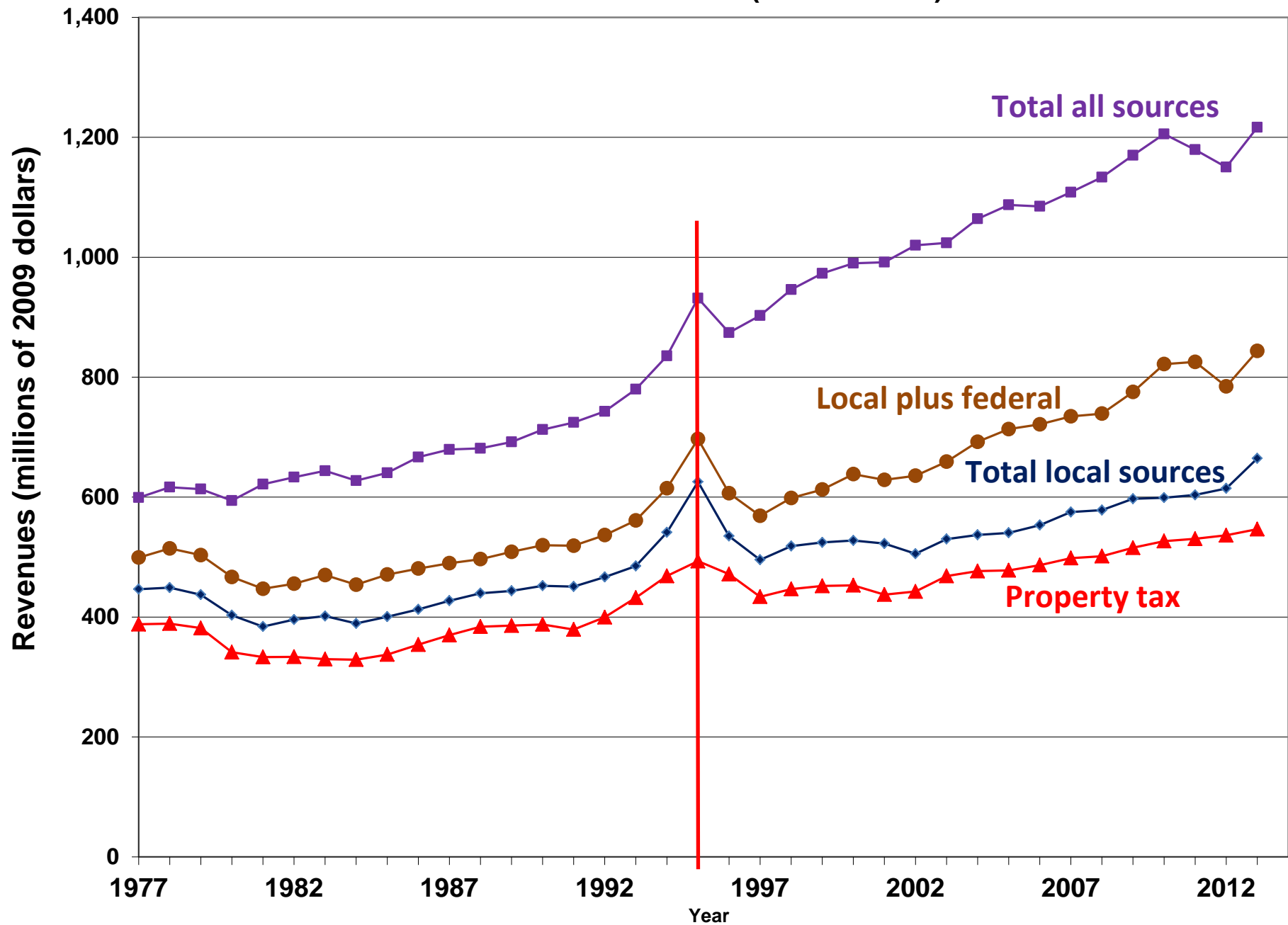
# Distribution of school revenue sources, 2011 - 2012



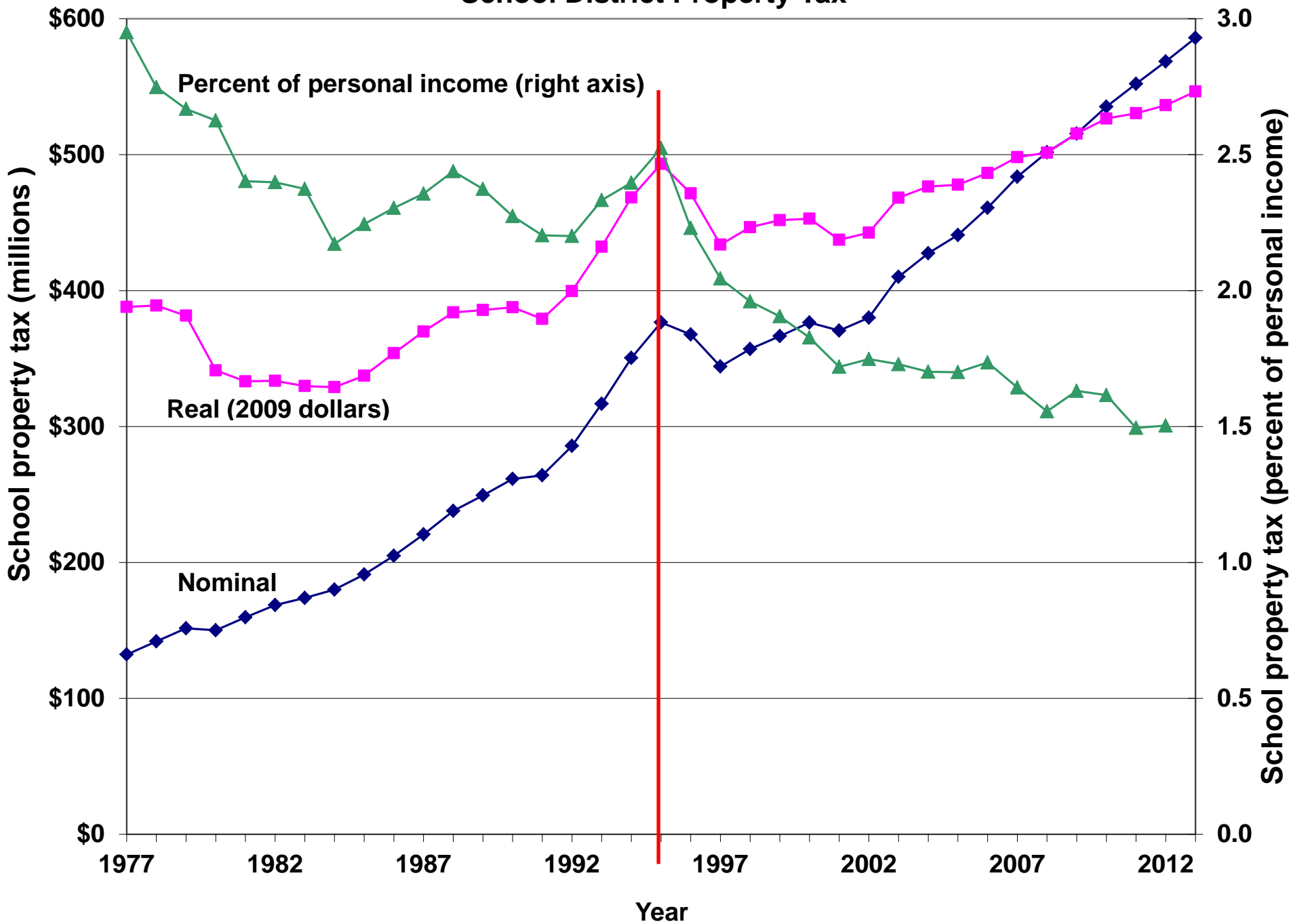
**School district revenues (2009 dollars)**



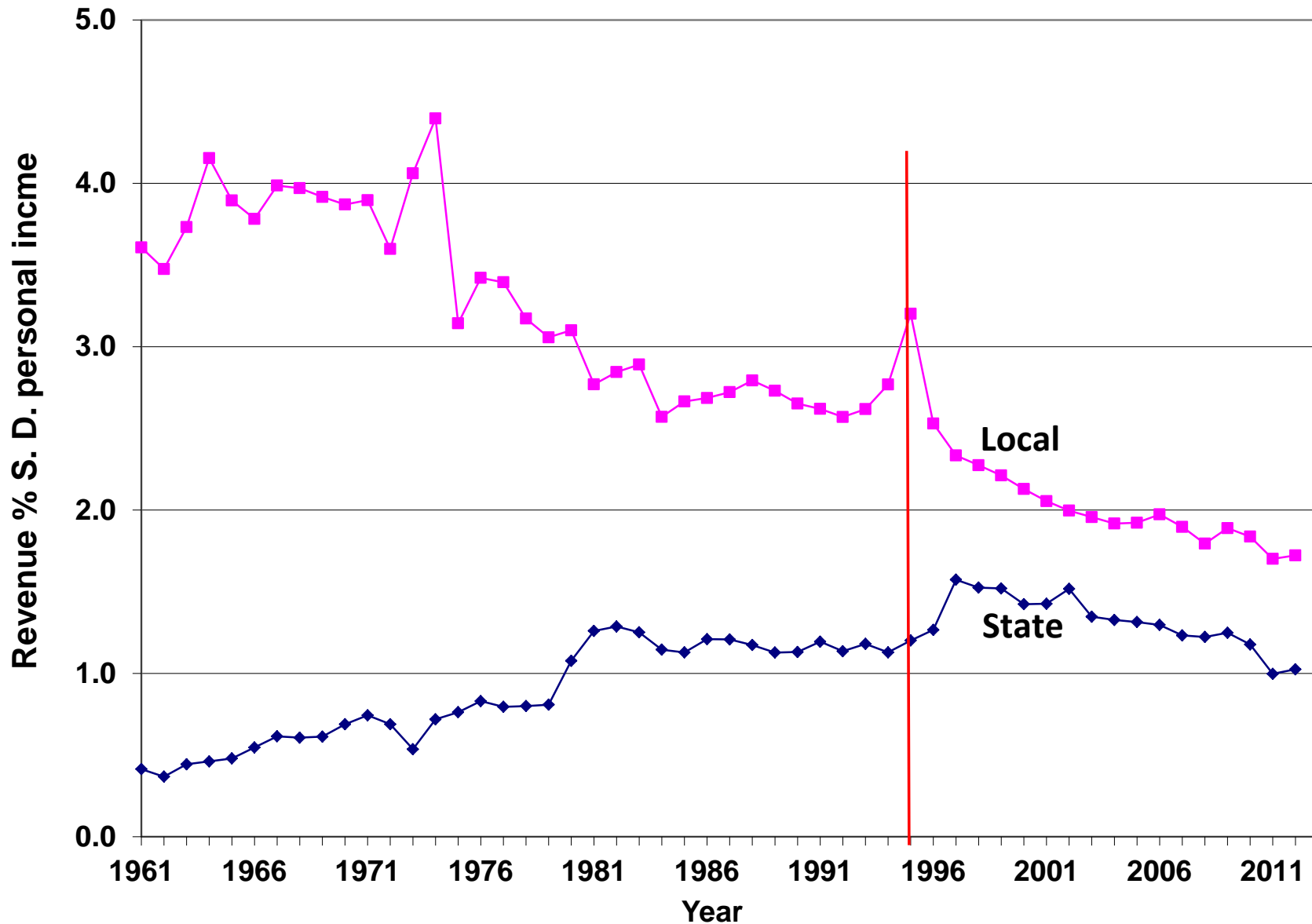
School district revenues (2009 dollars)



# School District Property Tax



State and local school revenue as percent of S. D. personal income





**Questions or comments?**



## SOURCES

**Average teachers' salary, 2012 – 13:** U. S. Department of Education, *Digest of Education Statistics, 2013*, Table 211.60. Accessed 23Jun14;

**Regional Price Parity Index, 2012:** Bureau of Economic Analysis, Regional Data, Regional price parities. Accessed 30Jun14;

**Median resid. property tax, 2012:** Josh Miller, “Real Estate Taxes by State, 2012”, October 15, 2013, National Association of Homebuilders, *Eye on Housing*. Accessed 3Jul14 [Data from American Community Survey];

**Ave. state and local sales tax rate, 2014:** Tax Foundation, *State and Local Sales Tax Rates in 2014*, March 18, 2014. Accessed 7Jul14;

**Average teacher salaries, selected years:** U. S. Department of Education, *Digest of Education Statistics, various years*;

**Average S. D. wages and salaries:** U. S. Department of Commerce, Bureau of Economic Analysis, Regional Data, State Economic Profiles. Accessed 23Jun14;

**Personal consumption expenditure deflator:** U. S. Department of Commerce, Bureau of Economic Analysis, National Income and Product Accounts Tables. Accessed 22Jun14;

**School district general fund spending + special education spending by object, school district revenue, school district property tax, state and local school revenue:** S. D. Department of Education, “Statistical Digest,” various years.

**Teacher benefits as percent of teacher salaries, school revenue per capita, school revenue as percent of personal income, distribution of school revenue sources:** U. S. Bureau of the Census, *Public Elementary–Secondary Education Finance Data, Fiscal Year 2012*.

# School finances compared to national averages

## Revenue and spending per student

	Elementary-secondary revenue				Current spending					
	Total	From Fed. sources	From state sources	From local sources	Total	Instruction			General admin.	School admin
						Total	Salaries	Benefits		
50-state average	12,331	1,235	5,609	5,488	10,608	6,430	4,287	1,573	202	577
South Dakota	10,149	1,665	3,093	5,392	8,446	5,027	3,467	964	283	417
SD / 50-state	82%	135%	55%	98%	80%	78%	81%	61%	140%	72%
SD rank	41	5	49	19	41	42	41	44	33	47

## Revenue and spending per \$1,000 personal income

	Elementary-secondary revenue				Current spending					
	Total	From Fed. sources	From state sources	From local sources	Total	Instruction			General admin.	School admin.
						Total	Salaries	Benefits		
50-state average	45.11	4.52	20.52	20.07	39.30	24.02	15.68	5.76	0.74	2.11
South Dakota	35.10	5.76	10.70	18.65	29.40	17.57	11.99	3.33	0.98	1.44
SD / 50-state	78%	127%	52%	93%	75%	73%	76%	58%	133%	68%
SD rank	48	10	50	24	49	49	49	47	37	49